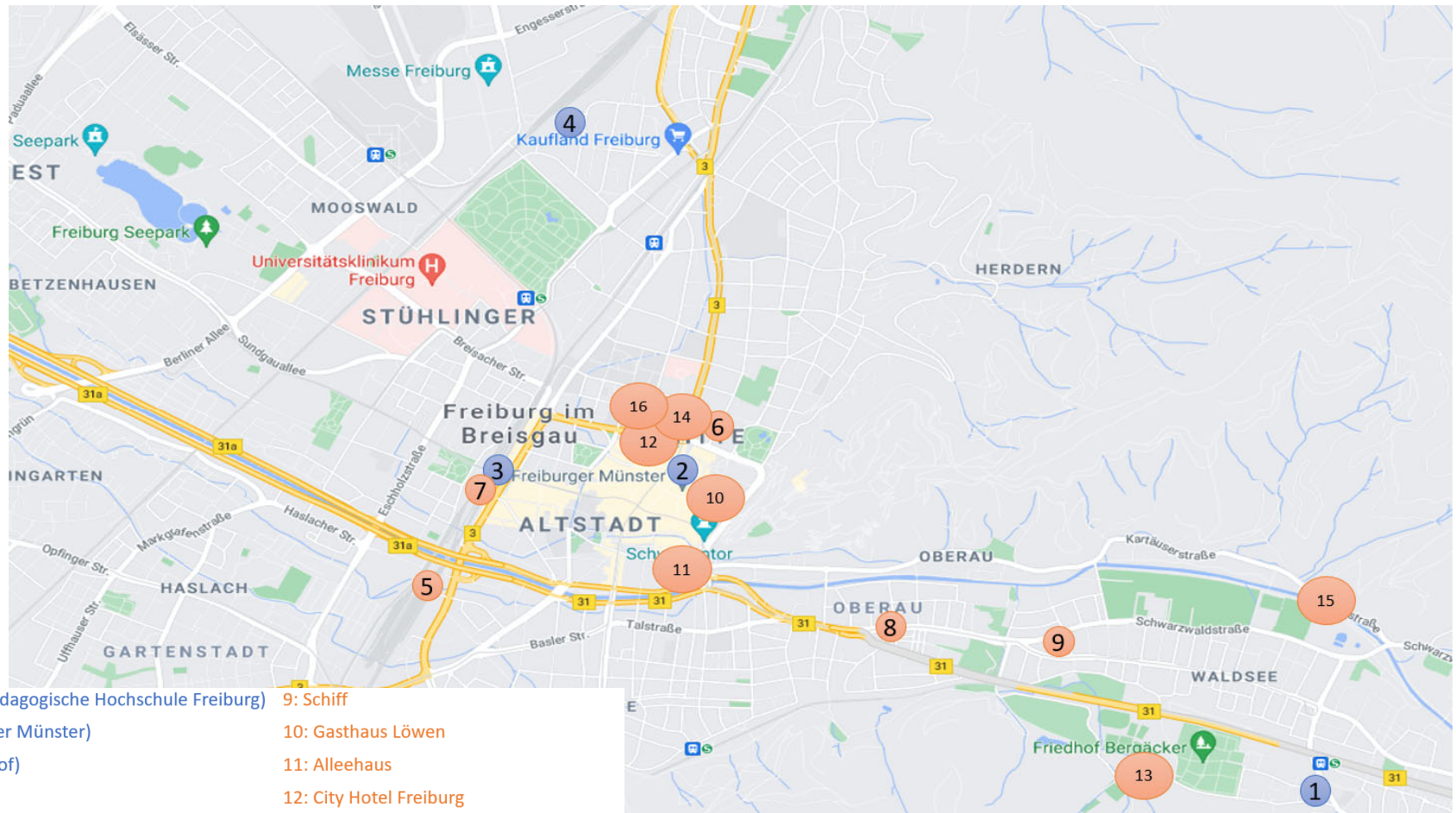


Hotel list Freiburg - abbreviated

The venue (PH Freiburg – 1) is a bit outside of the city center ('Altstadt'), but it is easy to reach with tram or train.

There are many hotels around the city center - you can find many more on the different booking sites. However we added some options closer to the PH Freiburg.



- | | |
|---|---------------------------------------|
| 1: University of Education (Pädagogische Hochschule Freiburg) | 9: Schiff |
| 2: Freiburg Minster (Freiburger Münster) | 10: Gasthaus Löwen |
| 3: Main Station (Hauptbahnhof) | 11: Alleehaus |
| 4: Lokhalle Freiburg | 12: City Hotel Freiburg |
| 5: Premier Inn Freiburg | 13: Spa-Hostel Freiburg |
| 6: Stadthotel Freiburg Kolping Hotels & Resorts | 14: Mercure Hotel Freiburg am Münster |
| 7: Intercity Hotel Freiburg | 15: Jugendherberge Freiburg |
| 8: Hotel Gasthaus Schützen | 16: Motel One Freiburg |

Hotel list Freiburg - abbreviated

Premier Inn Freiburg:

Address: Heinrich-von-Stephan-Str. 19, 79100 Freiburg

Location:

- From the Freiburg main station, you can reach the hotel on foot – it's only a 15-minute walk away. Alternatively, you could come by taxi, or hop on the 11-bus towards *Munzinger Straße* and get off at *Rehlingstraße*.
- The best way to get to the University of Education is to take the S10 towards *Villingen* or the S11 towards *Titisee* from the main station and get off at the second stop, *Littenweiler station* (23 minutes in total).
- We will probably get together on Friday evening for the Conference Dinner in the Lokhalle (Paul-Ehrlich-Straße 7) in Freiburg. You can get there by taking tram line 2 in the direction of *Hornusstraße* at the main train station and getting off at *Rennweg*. From there, it is only a 10-minute walk to get to the Lokhalle (29 minutes in total).

Link:

- <https://www.premierinn.com/gb/en/hotels/germany/baden-wuerttemberg/freiburg/freiburg-city-sud.html?ARRdd=08&ARRmm=10&ARRyyy=2021&NIGHTS=2&ROOMS=1&ADULT1=1&CHILD1=0&COT1=0&INTTYP1=DB&BRAND=PID>



Stadthotel Freiburg Kolping Hotels & Resorts:

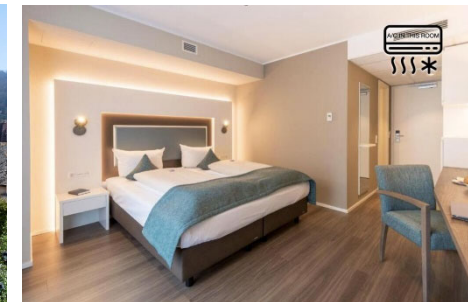
Address: Karlstraße 7, 79104 Freiburg

Location:

- From Freiburg main station you can reach the hotel by taking tram line 4 in the direction of *Zähringen* and get off at *Europaplatz* (9 minutes in total).
- To get to the University of Education, walk 12 minutes through the old town of Freiburg to the tram line 1 station *Schwabentorplatz*. From there, take tram line 1 in the direction of *Littenweiler* and get off at *Laßbergstrasse* (32 minutes in total).
- We will probably get together on Friday evening for the Conference Dinner in the Lokhalle (Paul-Ehrlich-Straße 7) in Freiburg. You can get there by taking tram line 4 in the direction of *Zähringen* at the station *Europaplatz* and getting off at *Okenstraße*. From there it is only a 12-minute walk to get to the Lokhalle (21 minutes in total).

Link:

- <https://www.hotel-freiburg.de/de/stadthotel-freiburg/>



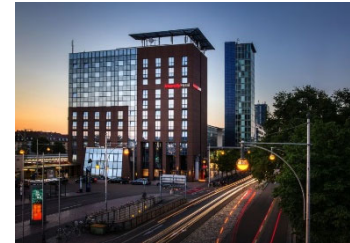
Hotel list Freiburg - abbreviated

Intercity Hotel Freiburg:

Address: Bismarckallee 3, 79098 Freiburg

Location:

- The hotel is located directly at the main train station in Freiburg.
- The best way to get to the University of Education is to take the S10 towards *Villingen* or the S11 towards *Titisee* from the main station and get off at the second stop, *Littenweiler station* (8 minutes in total).
- We will probably get together on Friday evening for the Conference Dinner in the Lockhalle (Paul-Ehrlich-Straße 7) in Freiburg. You can get there by taking tram line 2 in the direction of *Hornusstraße* at the main train station and getting off at *Rennweg*. From there it is only a 10-minute walk to get to the Lokhalle (19 minutes in total).



Link:

- <https://www.intercityhotel.com/hotels/alle-hotels/deutschland/freiburg/intercityhotel-freiburg>

Hotel Gasthaus Schützen:

Address: Schützenallee 12, 79102 Freiburg

Location:

- From Freiburg main station you can reach the hotel by taking tram line 1 in the direction of *Littenweiler* and getting off at *Maria-Hilf-Kirche* (14 minutes in total).
- To get to the University of Education take tram line 1 in the direction of *Littenweiler* and get off at *Laßbergstrasse* (16 minutes in total).
- We will probably get together on Friday evening for the Conference Dinner in the Lokhalle (Paul-Ehrlich-Straße 7) in Freiburg. You can get there by taking tram line 1 in the direction of *Landwasser* at *Maria-Hilf-Kirche* and getting off at *Bertoldsbrunnen*. From there, take tram line 4 in the direction of *Zähringen* and get off at *Okenstraße*. From the station *Okenstraße* it is only a 12-minute walk to get to the Lokhalle (40 minutes in total).



Link:

- <https://www.schuetzen-freiburg.de/hotel/>

Hotel list Freiburg - abbreviated

Schiff:

Address: Schwarzwaldstraße 82, 79102 Freiburg

Location:

- From Freiburg main station you can reach the hotel by taking tram line 1 in the direction of *Littenweiler* and getting off at *Musikhochschule* (16 minutes in total).
- To get to the University of Education take tram line 1 in the direction of *Littenweiler* and get off at *Laßbergstrasse* (16 minutes in total).
- We will probably get together on Friday evening for the Conference Dinner in the Lokhalle (Paul-Ehrlich-Straße 7) in Freiburg. You can get there by taking tram line 1 in the direction of *Landwasser* at *Musikhochschule* and getting off at *Bertoldsbrunnen*. From there, take tram line 4 in the direction of *Zähringen* and get off at *Okenstraße*. From the station *Okenstraße* it is only a 12-minute walk to get to the Lokhalle (40 minutes in total).



Link:

- <https://freiburgerschiff.de/hotel/>

Gasthaus Löwen:

Address: Herrenstraße 47, 79098 Freiburg

Location:

- From Freiburg main station you can reach the hotel by taking any tram line 1,2,3,4 in the direction of *Littenweiler*, *Günterstal*, *Vauban*, *Zähringen* and get off at *Bertoldsbrunnen* (8 minutes in total).
- To get to the University of Education take tram line 1 in the direction of *Littenweiler* and get off at the end of the line at *Laßbergstrasse* (20 minutes in total).
- We will probably end the Friday evening for the Conference Dinner in the Lokhalle (Paul-Ehrlich-Straße 7) in Freiburg. You can get there by taking tram line 2 in the direction of *Hornusstraße* at *Bertoldsbrunnen* and getting off at *Rennweg*. From there, it is only a 10-minute walk to get to the Lokhalle (29 minutes in total).



Link:

- <https://www.hotelloewen.de/>

Hotel list Freiburg - abbreviated

Alleehaus:

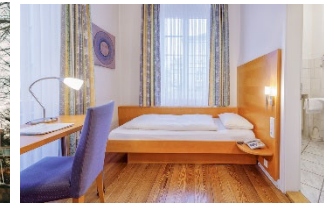
Address: Marienstraße 7, 79098 Freiburg

Location:

- From Freiburg main station you can reach the hotel by taking any tram 1,2,3,4 in the direction of *Littenweiler, Günterstal, Vauban, Zähringen* and get off at *Bertoldsbrunnen* (8 minutes in total).
- To get to the University of Education take tram line 1 in the direction of *Littenweiler* and get off at *Laßbergstrasse* (20 minutes in total). Otherwise you can go to the main station and take the S10 towards *Villingen* or the S11 towards *Titisee* and get off at the second stop, *Littenweiler station* (23 minutes in total).
- We will probably end the Friday evening for the Conference Dinner in the Lokhalle (Paul-Ehrlich-Straße 7) in Freiburg. You can get there by taking tram line 2 in the direction of *Hornusstraße* at *Bertoldsbrunnen* and getting off at *Rennweg*. From there, it is only a 10-minute walk to get to the Lokhalle (29 minutes in total).

Link:

- <https://hotel-alleehaus.de/>



City Hotel Freiburg:

Address: Weberstraße 3, 79098 Freiburg

Location:

- From Freiburg main station you can reach the hotel by taking tram line 4 in the direction of *Zähringen* and get off at *Europaplatz* (7 minutes in total).
- To get to the University of Education, walk 12 minutes through the old town of Freiburg to the tram line 1 station *Bertholdsbrunnen*. From there, take tram line 1 in the direction of *Littenweiler* and get off at *Laßbergstrasse* (30 minutes in total). Otherwise you can go to the main station and take the S10 towards *Villingen* or the S11 towards *Titisee* and get off at the second stop, *Littenweiler station* (35 minutes in total).
- We will probably get together on Friday evening for the Conference Dinner in the Lokhalle (Paul-Ehrlich-Straße 7) in Freiburg. You can get there by taking tram line 4 in the direction of *Zähringen* at the station *Europaplatz* and getting off at *Okenstraße*. From there it is only a 12-minute walk to get to the Lokhalle (21 minutes in total).

Link:

- <https://cityhotel-freiburg.de/>



Hotel list Freiburg - abbreviated

Spa-Hostel Freiburg:

Address: Waldseestr. 77, 79117 Freiburg

Location:

- To get from the main station to the hotel, either take the train or the tram. If you want to take the train, either take the S10 towards *Villingen* or the S11 towards *Titisee* and get off at *Littenweiler station*. If you want to take the tram, take line 1 in the direction of *Littenweiler* to the *Musikhochschule*. With both options, you reach your hotel after a 10-minute walk (30 minutes in total).
- The university of education is a 12-minute walk away (12 minutes in total).
- We will probably get together on Friday evening for the Conference Dinner in the Lokhalle (Paul-Ehrlich-Straße 7) in Freiburg. You can get there by taking tram line 1 in the direction of *Landwasser* at *Musikhochschule* and change at *Bertoldsbrunnen* into tram line 4 in the direction of *Zähringen* and get off at *Okenstraße*. From there it is only a 12-minute walk to get to the Lokhalle (40 minutes in total).



Link:

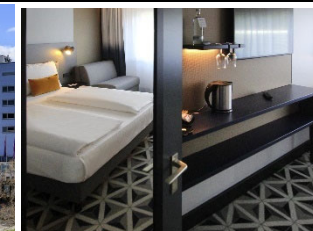
- <https://hostelspa-waldkurbad-freiburg-im-breisgau.freiburghotelsweb.com/de/>

Mercure Hotel Freiburg Am Muenster:

Address: Auf der Zinnen 1, 79098 Freiburg

Location:

- From Freiburg main station you can reach the hotel by taking tram line 4 in the direction of *Zähringen* and get off at *Europaplatz* (8 minutes in total).
- To get to the University of Education, walk 12 minutes through the old town of Freiburg to the tram line 1 station *Bertholdsbrunnen*. From there, take tram line 1 in the direction of *Littenweiler* and get off at *Laßbergstrasse* (30 minutes in total). Otherwise you can go to the main station and take the S10 towards *Villingen* or the S11 towards *Titisee* and get off at the second stop, *Littenweiler station* (39 minutes in total).
- We will probably get together on Friday evening for the Conference Dinner in the Lokhalle (Paul-Ehrlich-Straße 7) in Freiburg. You can get there by taking tram line 4 in the direction of *Zähringen* at the station *Europaplatz* and getting off at *Okenstraße*. From there it is only a 12-minute walk to get to the Lokhalle (21 minutes in total).



Link:

- <https://all.accor.com/hotel/0492/index.de.shtml?dateIn=&nights=&compositions=1&stayplus=false#origin=mercure>

Hotel list Freiburg - abbreviated

Youthhostel Freiburg:

Address: Kartäuserstraße 151, 79104 Freiburg

Location:

- From Freiburg main station you can reach the hotel by taking tram line 1 in the direction of *Littenweiler* and getting off at *Römerhof*. From there, you can reach the Hotel within a 12-minute walk (28 minutes in total).
- The university of education is a 22-minute walk away (22 minutes in total).
- We will probably get together on Friday evening for the Conference Dinner in the Lokhalle (Paul-Ehrlich-Straße 7) in Freiburg. You can get there by taking tram line 1 in the direction of *Landwasser* at *Römerhof* and getting off at *Bertoldsbrunnen*. From there, take tram line 4 in the direction of *Zähringen* and get off at *Okenstraße*. From the station *Okenstraße* it is only a 12-minute walk to get to the Lokhalle (50 minutes in total).

Link:

- <https://www.jugendherberge.de/en/youth-hostels/freiburg-9/portrait/>



Motel One Freiburg:

Adress: Friedrichring 1, 79098 Freiburg

Location:

- From Freiburg main station you can reach the hotel by taking tram line 4 in the direction of *Zähringen* and get off at *Europaplatz* (8 minutes in total).
- To get to the University of Education, walk 12 minutes through the old town of Freiburg to the tram line 1 station *Bertholdsbrunnen*. From there, take tram line 1 in the direction of *Littenweiler* and get off at *Laßbergstrasse* (30 minutes in total). Otherwise you can go to the main station and take the S10 towards *Villingen* or the S11 towards *Titisee* and get off at the second stop, *Littenweiler station* (39 minutes in total).
- We will probably get together on Friday evening for the Conference Dinner in the Lokhalle (Paul-Ehrlich-Straße 7) in Freiburg. You can get there by taking tram line 4 in the direction of *Zähringen* at the station *Europaplatz* and getting off at *Okenstraße*. From there it is only a 12-minute walk to get to the Lokhalle (21 minutes in total).

Link:

- <https://www.motel-one.com/de/hotels/freiburg/hotel-freiburg/>

